

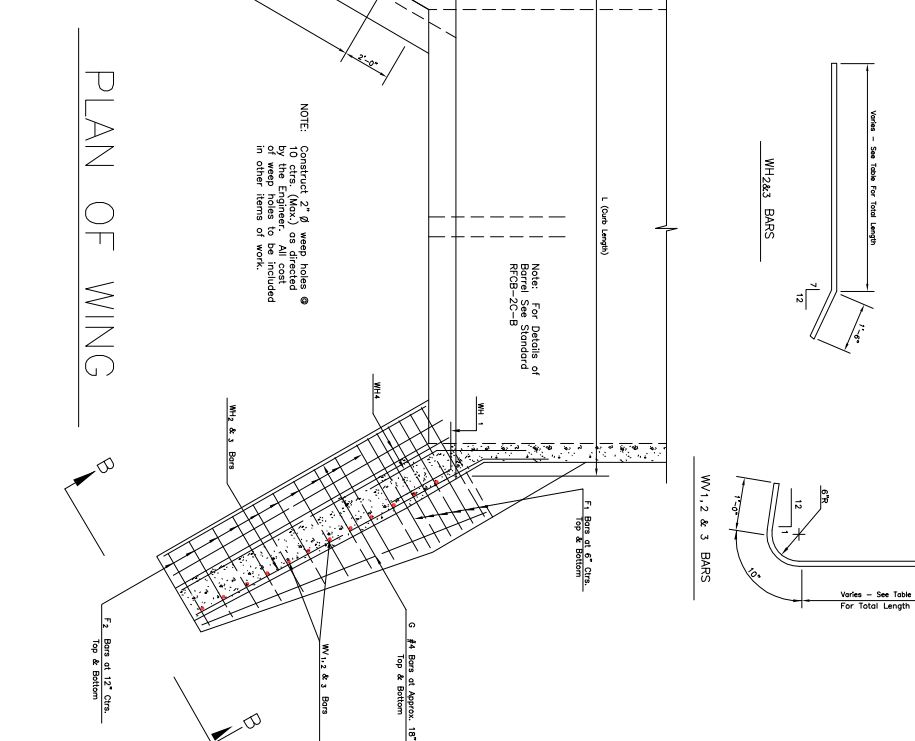
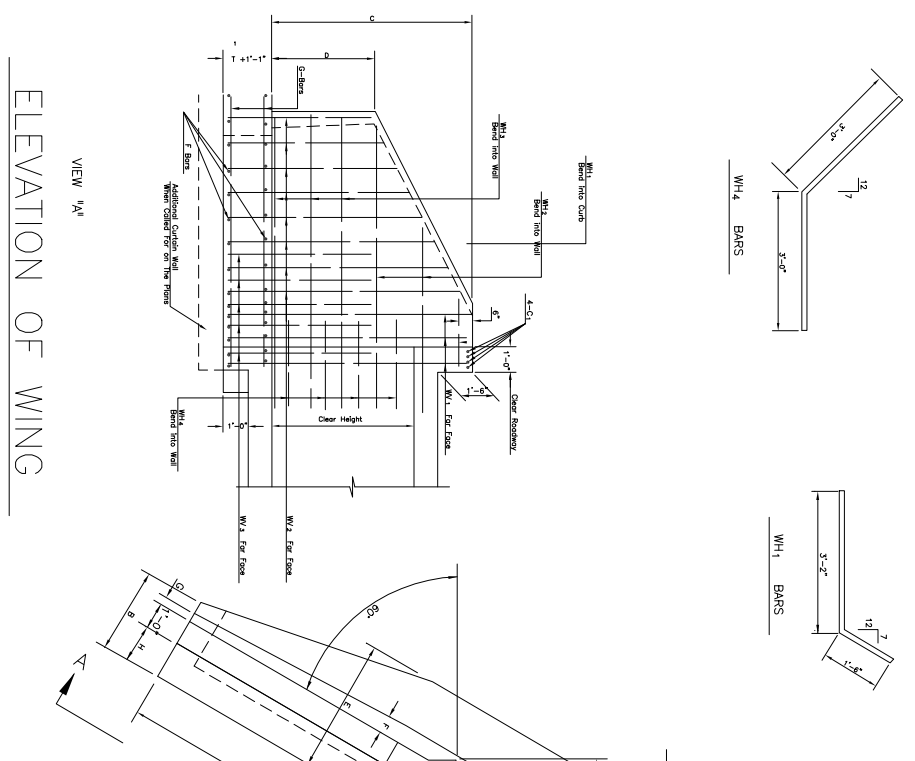
4 WINGS - 2 CURBS - 2 CUT-OFF WALLS

CLEAR SPAN	DIMENSIONS											REINFORCING											TOTAL QUANTITIES ϕ											
	A	B	C	D	E	F	G	H	L	T ₁	C1 Bars #6 As Shown	F1 Bars #4 at 6" Ctrs.	F2 Bars #4 at 12" Ctrs.	C Bars #4 As Shown	WH1 Bars #4 As Shown	WH2 Bars #4 at 18" Ctrs.	WH3 Bars #4 at 18" Ctrs.	WH4 Bars #4 x 6'-0" at 12" Ctrs.	WH1 Bars #4 at 12" Ctrs.	WH2 Bars #4 at 12" Ctrs.	WH3 Bars #4 at 12" Ctrs.													
4	5'-11"	2'-0 1/2"	6'-2 1/2"	3'-7"	4'-1"	6"	3 1/2"	1'-0"	19'-0 3/4"	8 1/2"	18'-0"	48	4'-2"	14	2'-0" to 4'-1"	32	9'-0"	4	4'-0"	2	9'-0"	2	10'-0" to 11'-0"	24	6'-0"	12	44	9'-10"	6	44	6'-3" to 6'-6"	1,100	200	
5	7'-4"	2'-10"	7'-5 1/2"	4'-4"	4'-7"	7"	3 1/2"	1'-0"	19'-0 3/4"	8 1/2"	18'-0"	48	4'-2"	16	2'-0" to 4'-1"	32	9'-0"	4	4'-0"	2	9'-0"	2	10'-0" to 11'-0"	24	6'-0"	12	44	9'-10"	6	44	6'-3" to 6'-6"	1,200	253	
6	8'-10"	3'-0"	8'-2 1/2"	4'-4"	5'-1"	8 1/2"	4 1/2"	1'-0"	19'-0 3/4"	8 1/2"	18'-0"	48	4'-2"	18	3'-1" to 4'-7"	32	11'-0"	4	4'-0"	2	9'-0" to 12'-7"	3	13'-1" to 14'-5"	32	6'-0"	12	44	10'-10"	9	44	7'-0" to 6'-6"	1,400	328	
8	5'-11"	2'-10"	6'-2 1/2"	3'-8"	4'-2"	6"	3 1/2"	1'-0"	23'-0 3/4"	9 1/2"	8	22'-0"	48	3'-10"	14	2'-0" to 3'-7"	32	8'-0"	4	4'-0"	1	9'-0"	2	10'-0" to 11'-0"	24	6'-0"	12	44	9'-0"	6	44	6'-5" to 6'-9"	1,100	216
6	8'-10"	3'-0"	8'-3 1/2"	4'-5"	5'-2"	8 1/2"	4 1/2"	1'-0"	23'-0 3/4"	9 1/2"	8	22'-0"	48	4'-10"	18	3'-1" to 4'-8"	32	11'-0"	4	4'-0"	2	9'-0" to 12'-7"	3	13'-1" to 14'-5"	32	6'-0"	12	44	11'-0"	9	44	7'-3" to 6'-9"	1,500	347
10	11'-0"	3'-7"	10'-3 1/2"	5'-2"	6'-2"	10 1/2"	5 1/2"	1'-0"	23'-0 3/4"	9 1/2"	8	22'-0"	48	4'-10"	19	3'-1" to 5'-8"	40	14'-0"	4	4'-0"	3	9'-0" to 16'-2"	3	17'-1" to 17'-7"	40	6'-0"	12	44	11'-0"	12	44	8'-0" to 12'-9"	1,600	507
12	17'-2"	4'-0"	14'-3 1/2"	6'-2"	8'-2"	11'-2 1/2"	6 1/2"	2'-0"	23'-0 3/4"	9 1/2"	8	22'-10"	56	6'-10"	30	3'-8" to 6'-8"	48	17'-0"	4	4'-0"	4	9'-0" to 20'-0"	3	20'-0" to 24'-0"	56	6'-0"	12	44	15'-0"	15	44	8'-7" to 6'-9"	2,800	713
6	5'-10"	3'-5"	6'-5 1/2"	4'-7"	5'-2"	8 1/2"	4 1/2"	1'-0"	23'-0 3/4"	9 1/2"	8	22'-10"	56	6'-10"	36	3'-8" to 6'-8"	48	20'-0"	4	4'-0"	4	9'-0" to 12'-7"	3	13'-1" to 14'-5"	32	6'-0"	12	44	11'-1"	9	44	7'-4" to 10'-10"	3,800	371
8	11'-0"	3'-7"	10'-5 1/2"	5'-4"	6'-2"	10 1/2"	5 1/2"	1'-0"	27'-0 3/4"	11 1/2"	8	26'-0"	48	6'-10"	18	3'-8" to 6'-8"	40	14'-0"	4	4'-0"	3	9'-0" to 16'-2"	3	20'-0" to 24'-0"	48	6'-0"	12	44	15'-1"	12	44	8'-1" to 6'-10"	2,100	528
12	17'-2"	4'-0"	14'-5 1/2"	6'-8"	8'-2"	11'-2 1/2"	6 1/2"	2'-0"	27'-0 3/4"	11 1/2"	8	26'-11"	56	7'-10"	36	4'-2" to 7'-8"	48	20'-0"	4	4'-0"	4	9'-0" to 20'-2"	4	20'-0" to 24'-0"	56	6'-0"	12	44	17'-1"	18	44	9'-7" to 6'-10"	4,000	1006

NOTE: QUANTITIES SHOWN INCLUDE CURBS, WINGS AND CUT-OFF WALLS FOR ONE UPSTREAM & ONE DOWNSTREAM END OF BARREL.

NOTES:

All construction and materials shall be in accordance with the current City of Chickasaw Standard Specifications for Highway Construction. Reinforcing steel in bottom slab (footing) shall be supported on bar chairs. Chairs shall be supported on timber, planks or cross "C" concrete reinforced steel in top slab shall be supported on slab spacers. Reinforcing steel in the walls shall be held in place by metal chairs. Wood plank or concrete strips shall be included in other items of work.



CITY OF CHICKASAW
COMMUNITY PLANNING & DEVELOPMENT

STD. RFCB-2C-FW

APPROVED BY: _____	DATE: _____	DRAWN: _____	DATE: _____
DIMENSION: D-402			